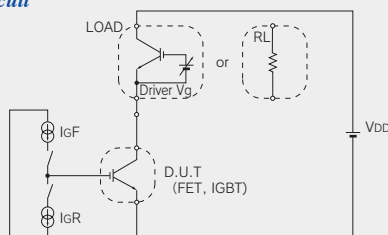
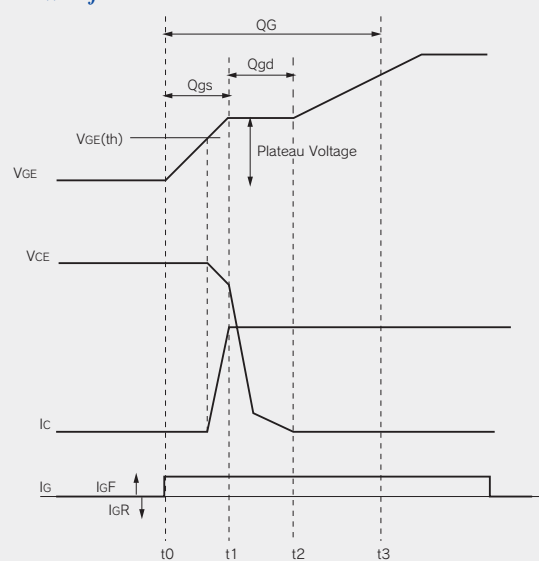
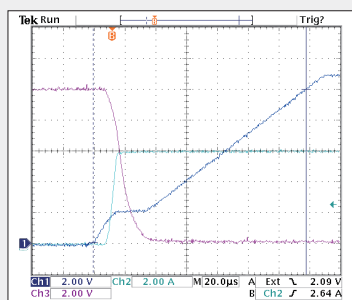


IGBT

MOS-FET

NEW**QG TESTER** QG測定装置**QGI600B** 600V

- QGI600B has designed to measure gate capacitance of MOS-FET and IGBT. It can set gate limit voltage to each plus and minus to correspond to depletion type.
- MOS-FET, IGBTのゲート容量を測定するテスターです。ゲートリミット電圧をプラス、マイナスそれぞれ設定することができティップレッション型タイプにも対応しています。

**Test Circuit****Measurement Waveform****Measurement Waveform**

| MODEL | | QGI600B |
|---------------------|-----------------|--------------------------------------|
| MEASURABLE DEVICES | | MOS-FET, IGBT |
| MEASUREMENT RANGE | | |
| Qgs | | 0.1nC~10.0μC |
| Qgd | | 0.1nC~10.0μC |
| Qg | | 0.1nC~10.0μC |
| SETTING RANGE | | |
| VDD | 10V~600V | 1V STEP |
| ID Limit | 1A~100A | 1A STEP |
| IGF | 00.01mA~99.99mA | 0.01mA STEP |
| I GR | 00.01mA~99.99mA | 0.01mA STEP |
| VGF Limit | 00.0V~20.0V | 0.1V STEP |
| VGR Limit | 00.0V~20.0V | 0.1V STEP |
| ON TIME | 5μs~999μs | 1μs STEP |
| Driver Vg | 00.000V~15.000V | 0.001V STEP |
| BINNING | | |
| BIN INDICATION | | PASS, LIMIT FAIL, ERROR, OPEN, SHORT |
| DIMENSIONS & WEIGHT | | |
| MAIN UNIT | | 430(W)×700(D)×245(H)~40kg |
| VDD SUPPLY CONTROL | | 430(W)×700(D)×245(H)~31kg |
| HEAD BOX | | 330(W)×700(D)×245(H)~24kg |